

# STANDBY POWER METER with DATA LOGGER

**Wattman** HPM-100A

*A surprisingly large number of electrical products such as PC's, TVs, Microwave ovens, Washers & Driers, Air conditioners, etc. cannot be switched off completely without being unplugged. These products draw power for 24 hours a day which power consumption we call "standby power."*

*There are some meters in the market to measure this standby power. Unfortunately, cost for some meters is too high or their accuracy is poor for low-cost ones. Wattman HPM-100A is the best Standby Power Meter satisfying both price and accuracy featuring wide measurement input range, Data Logger, GUI Program, etc.*



## Features

- Data Logger function
- GUI Program Gratuitous Supports
- Measurement of standby and consumption power (0.009W~3,600W)
- Simultaneous display of 4 values for Voltage, Current, Watt & Frequency
- Wide measurement range : AC, V, A, W, PF, Hz, Wh, VA, Var, CO<sub>2</sub> , Ocos $\theta$ , Electric charge, expelled volume
- Easy to use with multi-consent (Plug & Play)
- Electric charge calculation and expelled volume of CO<sub>2</sub> computation available
- Battery or Adaptor no needed for measurement
- Timely Set (1 hour ~ 24 hours)
- Complied with IEC 62301 Safety Standard
- Complied with EN 61010-1 Safety Standard
- RS232 to USB cable provided

# Technical Specification

Voltage Measure Range		
Voltage	AC 90V ~ 240V	±(0.3% reading+3 digits)
Current Measure Range		
Current	AC 100uA ~ 5mA	±(0.5% reading+3 digits)
	AC 5mA ~ 10A	±(0.3% reading+3 digits)
	AC 10A ~ 15A	±(0.4% reading+3 digits)
Wattage Measure Range		
Active Power (PF 1.0)	0.009W ~ 0.45W	±(0.5% reading+3 digits)
	0.45W ~ 2,600W	±(0.4% reading+3 digits)
	2,600W ~ 3,600W	±(0.5% reading+3 digits)
Reactive Power	0.009Var ~ 3,600Var	±(0.5% reading+3 digits)
Apparent Power	0.009VA ~ 3,600VA	±(0.5% reading+3 digits)
Power Factor		
Power Factor	± 0.001 ~ 1.000	± (0.5% reading+3 digits)
Wattage Measure Range		
Wattage	0.000mWh ~ 9,990kWh	± (1.0% reading+3 digits)
Frequency		
Frequency	50Hz ~ 1000Hz	± (0.3% reading+3 digits)
Dimension & Weight		
Dimension	115 (W) x 200 (H) x 45 (D) mm	
Weight	260 g	

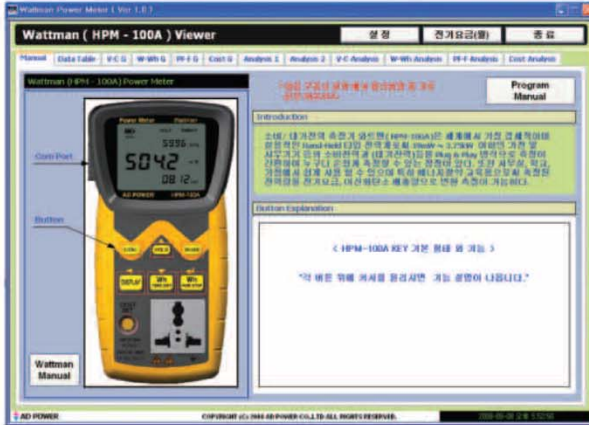
## Applications

- Public institution & consumption union
- Energy saving educational program
- Home appliance stores
- Electronic product line & service centers

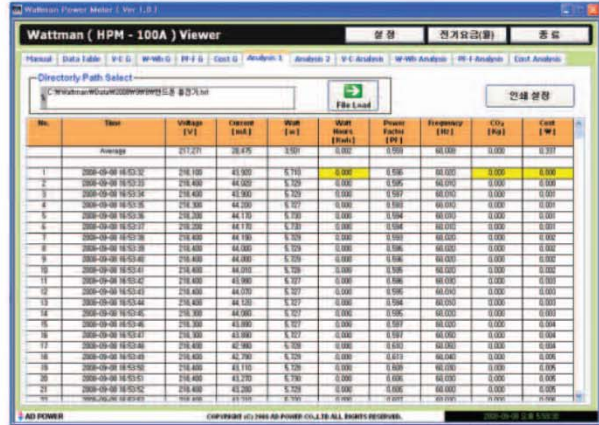
와트맨의 각부 명칭



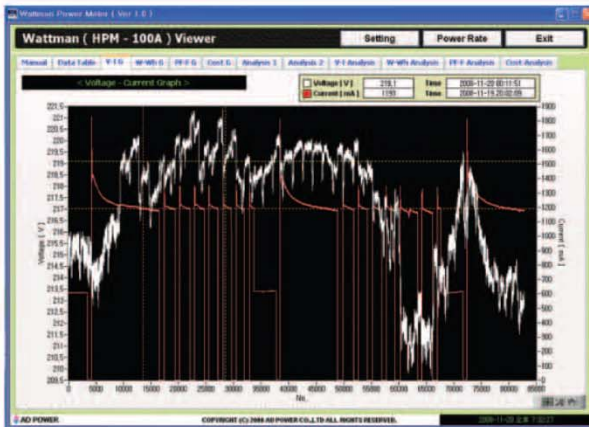
**GUI Program gratuitous supports**



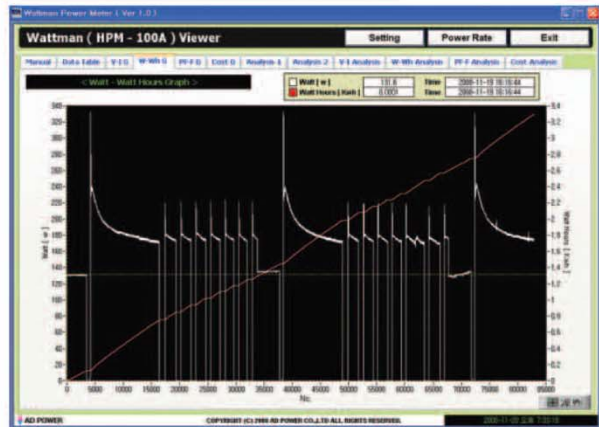
▲ Manual Window



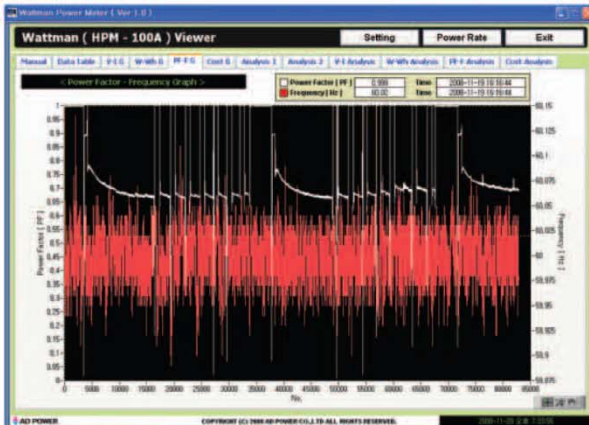
▲ Analyzer TAP



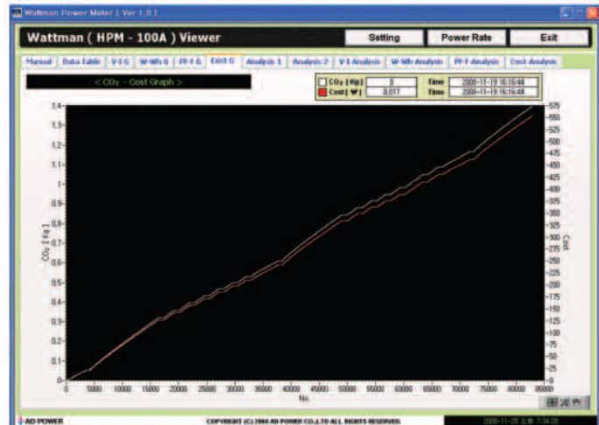
▲ Voltage & Current Graph TAP



▲ Watt & Wh Graph TAP



▲ PF & Frequency Graph TAP



▲ CO<sub>2</sub> & COST Graph TAP

## Configuration and Names



- ① Data Logging display
- ② AC Input power
- ③ Data HOLD
- ④ PC Communication display
- ⑤ Wattage display
- ⑥ Frequency display
- ⑦ Power factor, CO<sub>2</sub> output & electric charge display unit
- ⑧ Currency display ( \$ ¥ € )
- ⑨ Measured Active Power & Watt-hour display unit
- ⑩ Current : current usage display for the other measuring device
- ⑪ Voltage : voltage usage display for the other measuring device
- ⑫ Autoranging indication



## HPM-100A Components & Accessory

HPM-100A Basic components



HPM-100A



GUI PROGRAM - CD



Standard load



Bag



RS232 TO USB CABLE